

2011

New Features in 5.16



Portlock Corporation

1/24/2011

Portlock Boot CD
New Features in 5.16
January 24, 2011
Version 5.16

Copyright 2000-2011 Portlock Corporation

The Portlock storage management software described in this document is furnished under a License Agreement and may be used only in accordance with the terms of the agreement.

Version: 5.15

Date of Publication: January, 2011

NO WARRANTY. The technical documentation is being delivered to you AS IS and Portlock makes no warranty as to its accuracy or use. Any use of the technical documentation or the information contained therein is at the risk of the user. Documentation may include technical errors, typographical errors or other inaccuracies. Portlock reserves the right to make changes without prior notice.

All technical documentation made available by Portlock is the copyrighted work of Portlock. No part of this publication may be copied without the express written permission of Portlock.

Copyright 2000-2011 Portlock. All Rights Reserved. Portlock, the Portlock logo, Portlock Storage Manager, Portlock Scorpion, Portlock Volume Defrag, Portlock Disk Test and Portlock Storage Suite are trademarks of Portlock.

Other vendor product names mentioned in this manual may be trademarks or registered trademarks of their respective companies and are hereby acknowledged. Printed in the United States.

Contents

Chapter 1. Introduction	5
Introduction	5
Summary	5
Overview	5
Versions	6
PBCD based upon Server 2003:	6
PBCD based upon Server 2008:	7
Interface.....	8
Chapter 2. New Features in Version 5.16	9
Device Support	9
Better Interfaces.....	9
Improved Licensing.....	9
Installing Licenses.....	10
Improved Integration with Portlock License Manager	11
Updating Portlock Storage Manager	12
Support for VNC Remote Control on 64-bit Systems	12
Support for Team Viewer.....	12
Support for Linux File Systems	12
Support for SUSE Linux	13
Support for Xen HVM Virtual Machines	13
Support for Image Scripting	14
Support for modifying the WinPE environment.....	14

Chapter 1. Introduction

Introduction

This document is an overview of the new features in the Portlock Boot CD version 5.15.

The Portlock Boot CD is part of the Portlock Storage Manager product family. Portlock Boot CD is a complete bootable operating system based upon WinPE 2.1 (Windows Server 2008) or for older hardware WinPE 1.6 (Windows Server 2003). Portlock Storage Manager running on the Portlock Boot CD has nearly the same feature set as when running under NetWare. The Portlock Boot CD based upon WinPE 2.1 is available in 32-bit and 64-bit versions.

Summary

The Portlock Boot CD is a very mature product with extensive features for supporting enterprise class systems. Whether you plan to restore a server to bare-metal (server migration), virtualize an existing server to Microsoft / VMware / Xen or repair a non-booting system the Portlock Boot CD has the features to make your task a lot easier.

Overview

The Portlock Boot CD includes a number of programs for managing the WinPE environment:

- Portlock Storage Manager
- Portlock Drive Explorer
- Portlock Device Manager
- Portlock Drive Map
- Portlock Network Configuration
- Portlock Display Manager
- Portlock Language Manager
- Portlock WiFi Manager
- Portlock Gadget
- Portlock Taskbar
- Portlock Date and Time Manager
- Windows Remote Desktop
- Novell RCONIP
- VNC Viewer
- Mozilla Firefox

Versions

The Portlock Boot CD is based upon two versions of WinPE: Windows Server 2003 and Windows Server 2008.

The Server 2003 version supports old servers built prior to 2005 that do not have ACPI built into the motherboard. ACPI is required to support WinPE built with Windows Server 2008. The Server 2003 version also has reduced memory requirements and will boot in only 256 MB of memory. There are two releases of this build, one with and one without ramdisk boot. The ramdisk version requires an additional 300 MB of memory to load the ISO image into memory.

The Server 2008 version requires modern hardware but is the best version. This version has an extensive library of drivers and hardware support (20,000+ drivers). This version is available in 32-bit and 64-bit versions and a dual boot version that includes the 32-bit and 64-bit releases that can be selected at boot.

PBCD based upon Server 2003:

Benefits:

- Reduced memory requirements. The non ramdisk version will boot in 256 MB of memory. The ramdisk version requires 512 MB.
- The ramdisk versions will not blue-screen if there is a missing storage driver for the booting device. The non-ramdisk version requires storage controllers for the booting device and will blue-screen with STOP code 0x7B.
- Supports old hardware: server manufactured prior to 2005. If your server is running NetWare 4.x, you probably need this version.
- Supports drivers that are not supported by Windows Server 2008.

Drawbacks:

- The number of devices supported is not as large as the Server 2008 version.
- Runs slower, but supports older hardware.
- No 64-bit version, therefore large memory systems (4GB+) are limited to approximately 3 GB of addressable memory.
- The system boots from an ISO image and is read-only. Device drivers cannot be added after the system boots.

PBCD based upon Server 2008:

Benefits:

- Very large driver set. Almost all storage and networking controllers are supported. New versions are released as new controllers are developed.
- Device drivers can be added after the system boots.
- Higher performance.
- 64-bit version available.
- Better USB device support.

Drawbacks:

- Larger memory requirements. 1 GB is the minimum memory supported. 2 GB for good performance.
- Does not support old hardware that does not have ACPI chipsets on the motherboards.

Interface

The primary interface to the Portlock Boot CD is thru the Portlock Boot CD HTML interface. This interface provides a simple point and click method of launching programs on the Portlock Boot CD. The Portlock Taskbar provides a Windows style start menu to programs. Portlock Gadget provides a quick summary of system information – clicking on a control launches the item's management program.



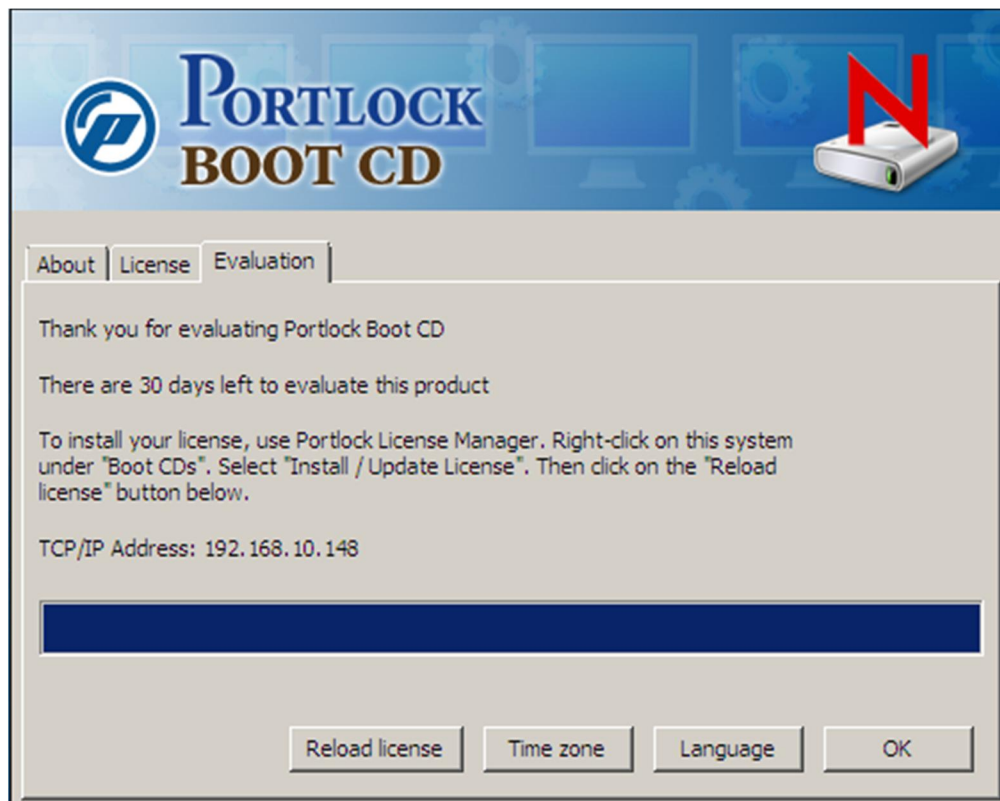
Chapter 2. New Features in Version 5.16

Device Support

The new version includes support for thousands of new devices. The current list of supported devices is over 29,350. A complete list of devices is published on the web site.

Better Interfaces

The new version has been improved to make interfacing with the Portlock Boot CD easier. For example Portlock License Manager will automatically find systems booted with the Portlock Boot CD provided that they are on the same network. Once the Portlock Boot CD boots up, the TCP/IP address is displayed making manually adding a remote system to Portlock License Manager easier.



Improved Licensing

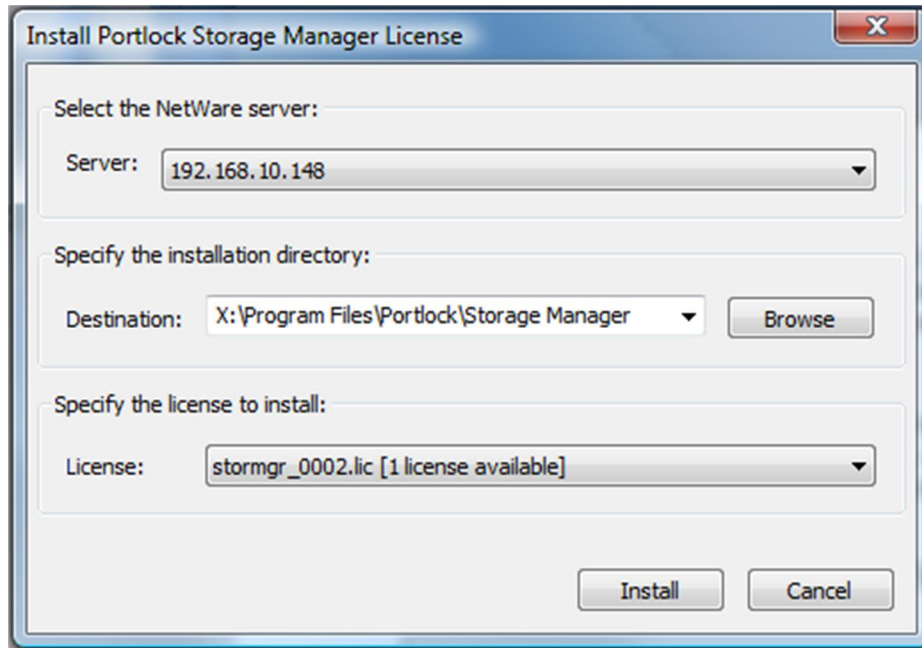
Portlock Storage Manager includes licenses for the Portlock Boot CD for all systems that are licensed for Portlock Storage Manager. In previous versions of the Portlock Boot CD, the license for the Portlock Boot CD would expire when the license for Portlock Storage Manager expired. This is no longer the case and provided that a valid Portlock Storage Manager license is present (current or expired), the Portlock Boot CD will continue to function.

Note: This does not apply to the licensing of Portlock Storage Manager. Portlock Storage Manager requires valid licenses for the version that you are using. Portlock License Manager can install or

update the version of Portlock Storage Manager on the Portlock Boot CD so that you can continue to use new versions of the Portlock Boot CD with your licensed version of Portlock Storage Manager.

Installing Licenses

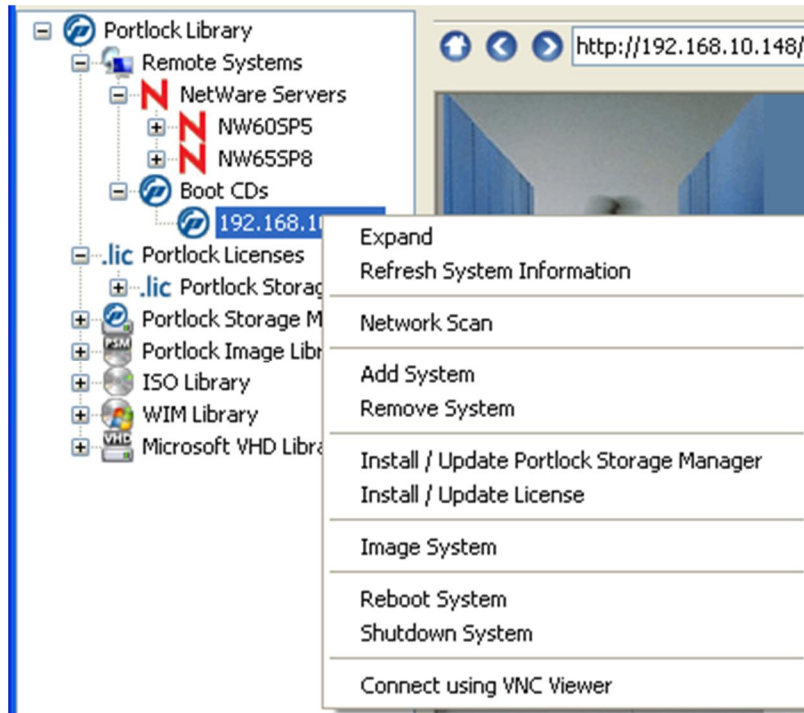
Previous versions of the Portlock Boot CD required that the license file be injected into the ISO image prior to burning to optical media. Version 5.14 and later no longer requires this as the license can be installed after the Portlock Boot CD boots using Portlock License Manager.



Improved Integration with Portlock License Manager

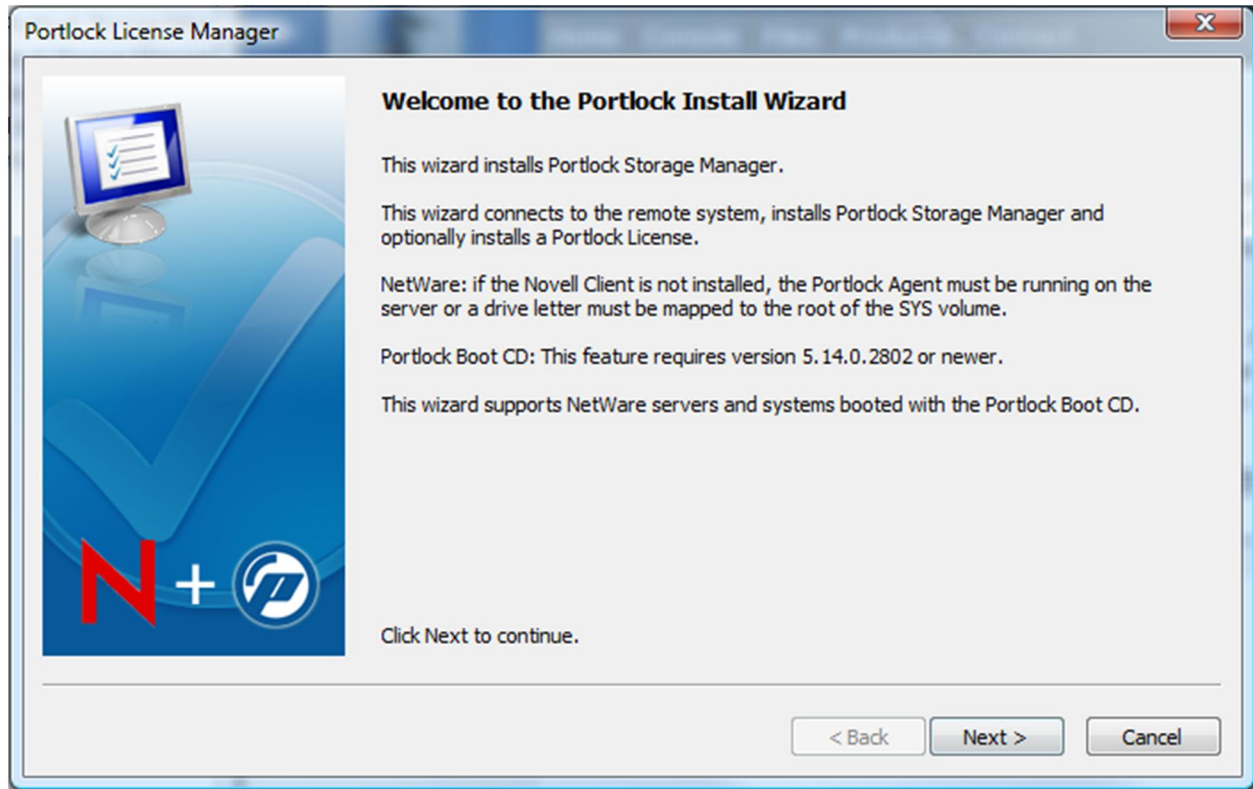
Portlock License Manager and the Portlock Boot CD have a number of new features that better integrate the two products. From Portlock License Manager:

- Install or update the version of Portlock Storage Manager on the Portlock Boot CD.
- Install a Portlock Storage Manager license on the Portlock Boot CD.
- Image a system booted with the Portlock Boot CD.
- Reboot or shutdown a system booted with the Portlock Boot CD.



Updating Portlock Storage Manager

Starting with version 5.14, Portlock Storage Manager can be updated on a running Portlock Boot CD.



Support for VNC Remote Control on 64-bit Systems

Portlock License Manager now includes both 32-bit and 64-bit versions of the VNC active-x control that is used to display the Portlock Boot CD console inside Portlock License Manager. Previous versions only included a 32-bit active-x control which meant that the 64-bit version of Portlock License Manager could not display the Portlock Boot CD console.

Support for Team Viewer

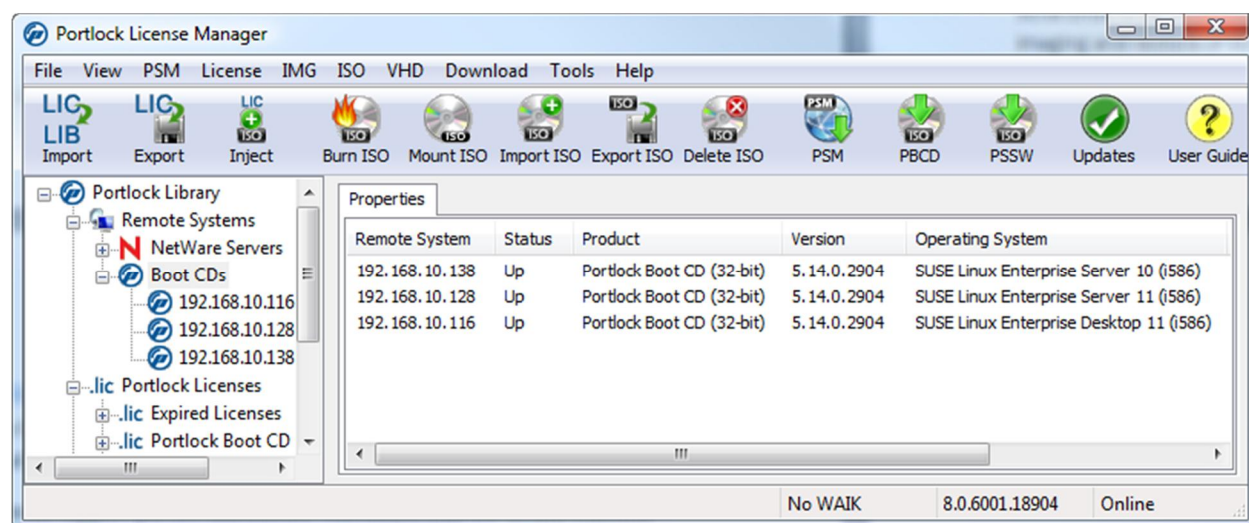
The 32-bit Portlock Boot CD now includes Team Viewer for remote control. You can now remotely access the Portlock Boot CD securely over private and public Internets. To start Team Viewer, click on the Taskbar Start button; go to "Programs" -> "Remote" -> "Team Viewer".

Support for Linux File Systems

The Portlock Boot CD now includes file system drivers for Ext2, Ext3 and Reiser file systems. Supported Linux file system can be optionally mounted with a read-only Windows drive letter that can be accessed from the Command Prompt or Portlock Drive Explorer.

Support for SUSE Linux

SUSE Linux Enterprise Desktop and SUSE Linux Enterprise Server are automatically detected. Bare-metal imaging and restore of SUSE based Linux systems is now supported.



Support for Xen HVM Virtual Machines

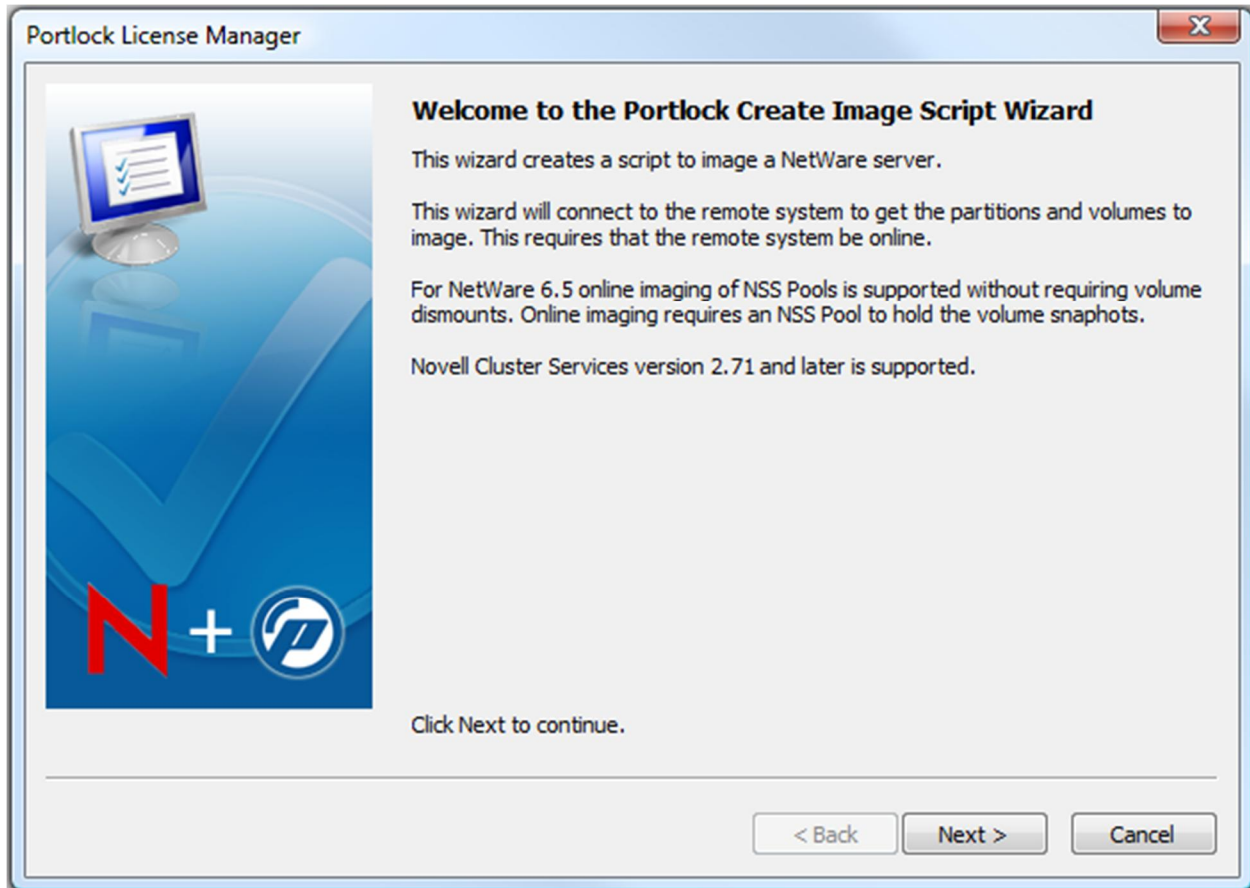
The Portlock Boot CD can now boot Xen HVM virtual machines (fully virtualized virtual machines). This is primarily to support P2V of NetWare onto SUSE Linux.

Note: Windows and WinPE do not support paravirtualization. This means that the virtual machine type must be set to "fully virtualized" instead of "paravirtualized" in order for the Portlock Boot CD to startup. This also means that the hardware must support hardware assisted virtualization (VT-X).

The Portlock Boot CD also continues to improve its support for VMware, Hyper-V and VirtualBox.

Support for Image Scripting

Portlock License Manager can now script the image of a server booted with the Portlock Boot CD. Portlock License Manager includes a new Script Creation Wizard. Once a script has been created, a simple right-click on a system will launch Portlock Storage Manager to execute the image commands.

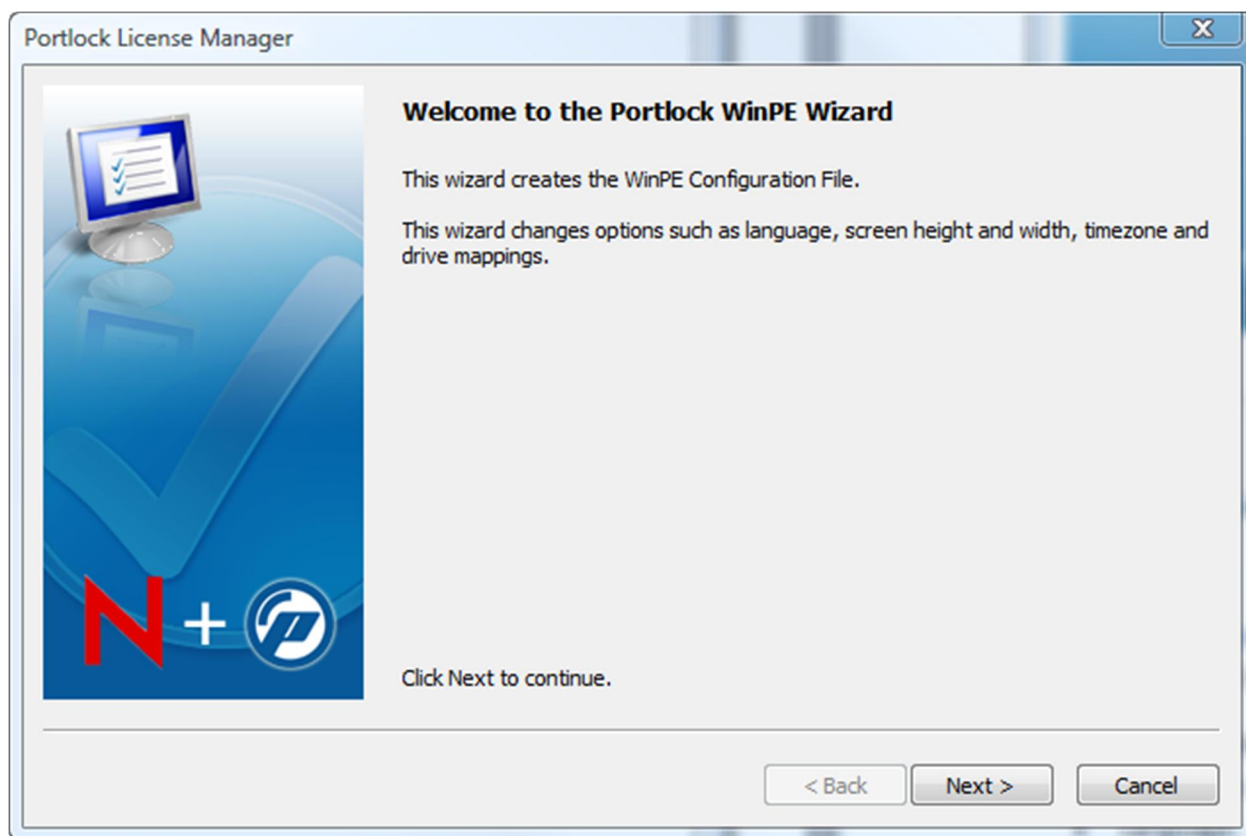


Support for modifying the WinPE environment

The Portlock Boot CD now supports a WinPE configuration file that controls common options:

- Display width and height.
- Time zone.
- Language.
- Keyboard.
- Text direction.
- Network drive maps.

Portlock License Manager includes a wizard to create or modify the configuration file "winpe.xml". Right-click on the ISO image file, select "Modify WinPE options". The file winpe.xml is automatically injected into the ISO image file and can also be copied to a partition or a removable USB Flash Drive.



[End of Document]